


jan smith | naukluft



A black and white photograph of a hand with a ring, resting on a draped fabric. The hand is positioned in the lower center of the frame, with the index finger pointing towards the right. The fabric is draped in a way that creates deep, soft shadows and highlights, giving it a sense of movement and texture. The lighting is dramatic, coming from the upper left, which casts long, soft shadows across the fabric and the hand. The overall mood is contemplative and artistic.

Retratar una mujer
y pensar en otra.

La mujer de la memoria
desaparece.

Es aquella, la del desierto,
que se hace demasiado presente.

R.D.



Naukluft park is in Namibia, an part of the Namib, the world's oldest desert. The park is a combination of the Namib Desert Park and the Naukluft Mountain Zebra Park as well as sections of the Diamond Area.

The combined area of the park is just under 50,000km² but the desert itself extends over most of Namibia, reaching north into Angola and south, well into South Africa.

The north is known as the Skeleton Coast; named for the bleached whale and seal bones which covered the shore when the whaling industry was still active. Hundreds if not thousands of shipwrecks litter the coast and lend a further nuance to this name.

In the south, winds race through deep valleys. The force the surface of the earth to become uncharacteristically dry. The Sperrgebiet, or forbidden zone, experiences the highest wind speeds ever recorded on earth.

The central part of the park, where these aerial photographs were taken, is confined by the Atlantic Ocean in the west and the Naukluft escarpment to the east. Rain is precious scarce but moisture is

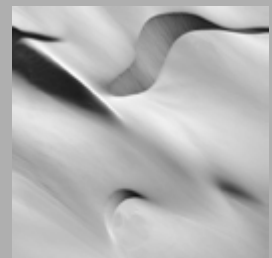
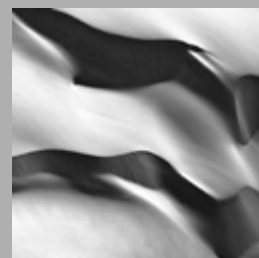
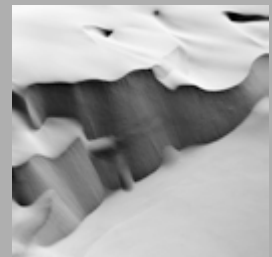
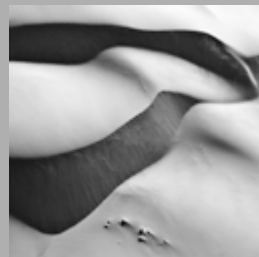
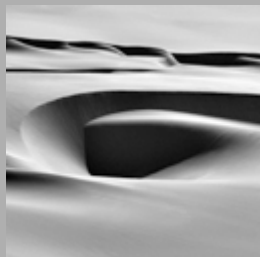
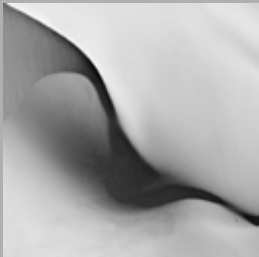
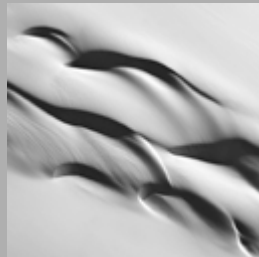
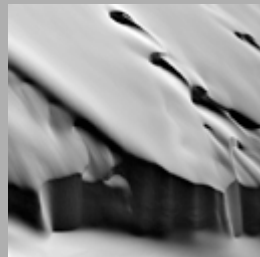
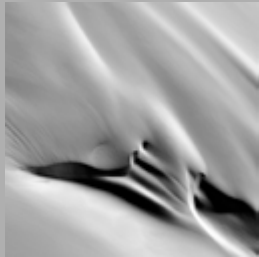
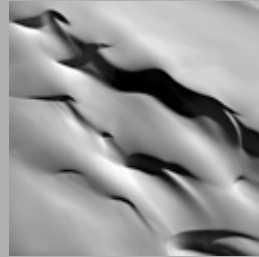
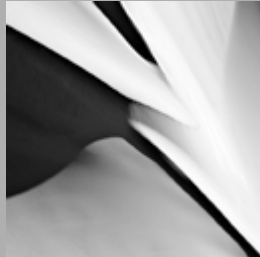
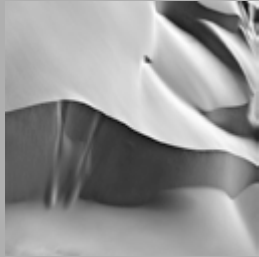


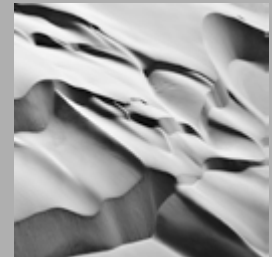
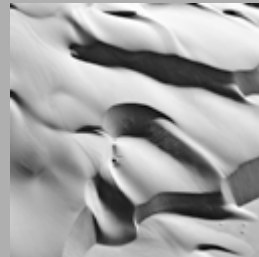
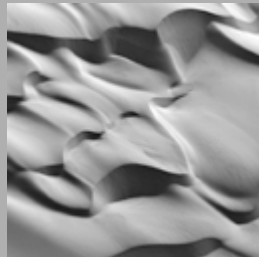
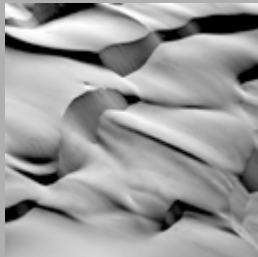
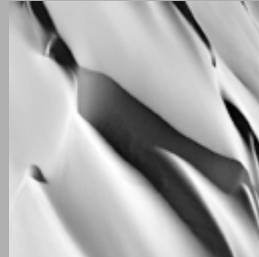
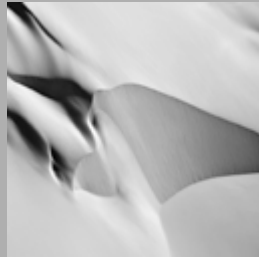
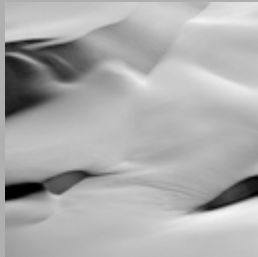
fed to the land by reliable banks of fog that roll inward from the Atlantic Ocean for many miles.

The winds that bring in the fog are also

responsible for building towering sand dunes, whose burnt orange color is a sign of their age. The orange color develops over time as iron in the sand is oxidized, like rusty metal. The older the dune, the brighter the color.

These dunes are the tallest in the world, in places rising more than 300 meters above the desert floor. The dunes taper off near the coast, becoming lagoons, wetlands, and mudflats.

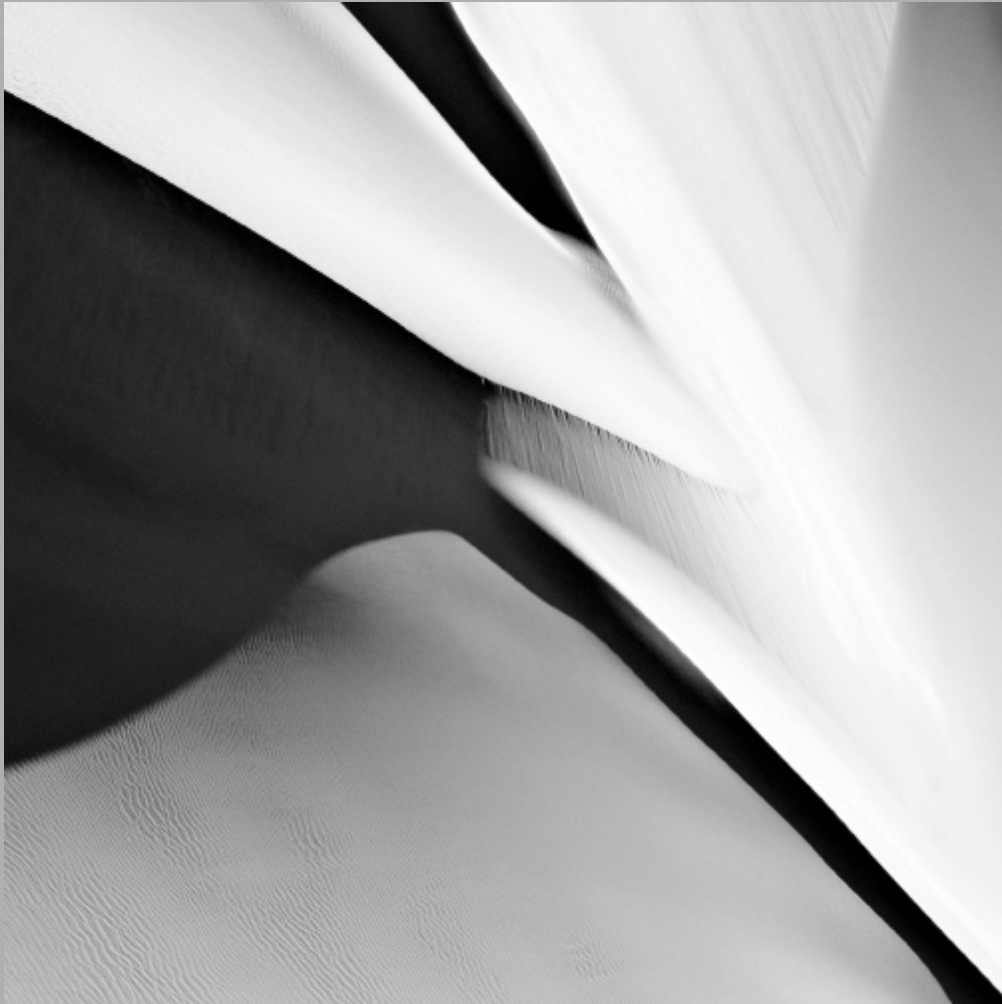






Namib 1 - Naukluft

Naukluft, Namibia, 2009



Namib 2 - Naukluft

Naukluft, Namibia, 2009





Namib 3 - Naukluft

Naukluft, Namibia, 2009





Namib 4 - Naukluft

Naukluft, Namibia, 2009



[About](#) [Production](#) [Portfolio](#) [Artist](#) [Contact](#)





Namib 5 - Naukluft

Naukluft, Namibia, 2009



Namib 6 - Naukluft

Naukluft, Namibia, 2009



Namib 7 - Naukluft

Naukluft, Namibia, 2009





Namib 8 - Naukluft

Naukluft, Namibia, 2009





Namib 9 - Naukluft

Naukluft, Namibia, 2009



Namib 10 - Naukluft

Naukluft, Namibia, 2009



Namib 11 - Naukluft

Naukluft, Namibia, 2009



Namib 12 - Naukluft

Naukluft, Namibia, 2009





Namib 13 - Naukluft

Naukluft, Namibia, 2009



Namib 14 - Naukluft

Naukluft, Namibia, 2009



Namib 15 - Naukluft

Naukluft, Namibia, 2009





Namib 16 - Naukluft

Naukluft, Namibia, 2009





Namib 17 - Naukluft

Naukluft, Namibia, 2009





Namib 18 - Naukluft

Naukluft, Namibia, 2009





Namib 19 - Naukluft

Naukluft, Namibia, 2009





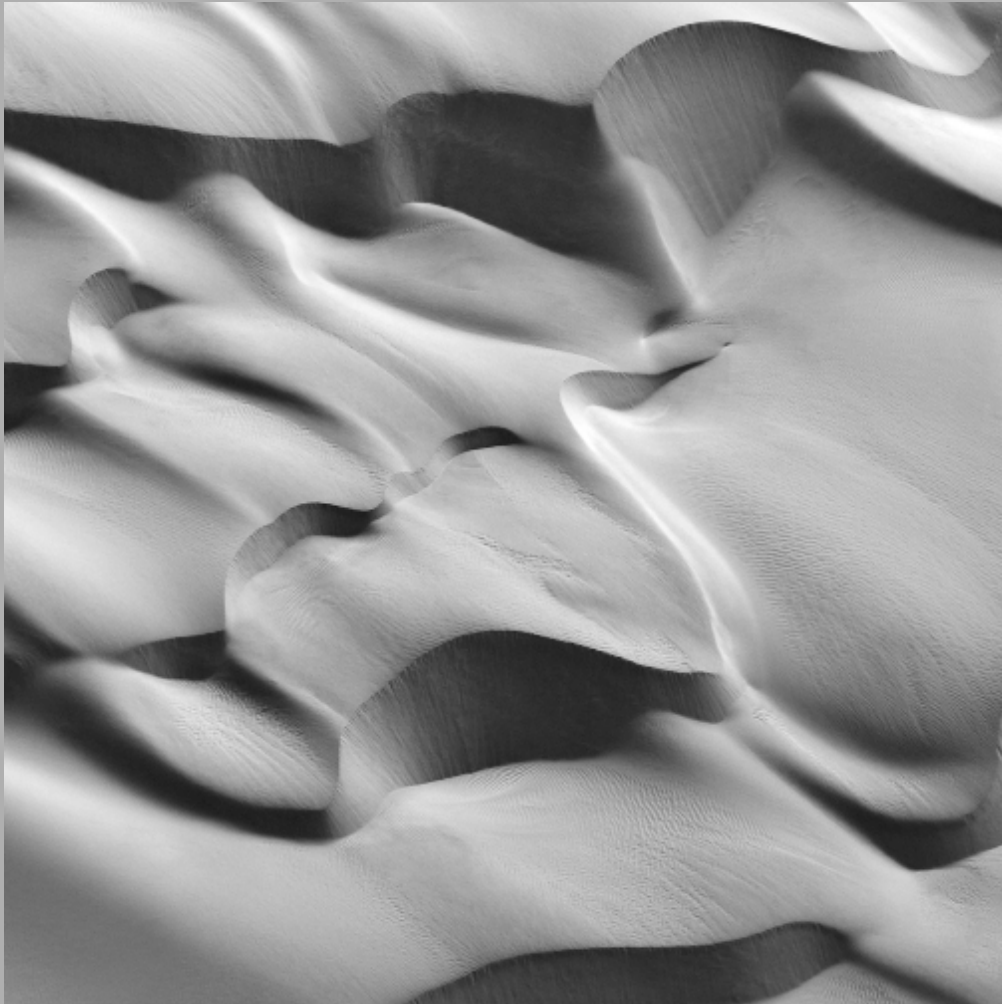
Namib 20 - Naukluft

Naukluft, Namibia, 2009



Namib 21 - Naukluft

Naukluft, Namibia, 2009



Namib 22 - Naukluft

Naukluft, Namibia, 2009



Namib 23 - Naukluft

Naukluft, Namibia, 2009





Namib 24 - Naukluft

Naukluft, Namibia, 2009



Namib 25 - Naukluft

Naukluft, Namibia, 2009



Namib 26 - Naukluft

Naukluft, Namibia, 2009





Namib 27 - Naukluft

Naukluft, Namibia, 2009



Namib 28 - Naukluft

Naukluft, Namibia, 2009



└ On Paper

└ Production

Negatives: 35mm DSLR

Medium: Archival ink jet on cotton or luster paper

└ Dimensions

16x16 inches /41x41cm

└ Signature

All images are signed in back with carbon pencil.

└ Edition

Unlimited edition

└ **Aerial photography services provided by:**

Pleasure Flights + Safaris

Swakopmund /Namibia /P.O.Box 537

Tel: +264 64 404500 /Fax: +264 64 405284 /e-mail: redbaron@iafrica.com.na



↳ Individual Shows

2010

- Pop. Density, Galería Epson México D.F.
- Nouadhibou, Galeria Mesa Fine Art, Dominican Republic
- Pop. Density, Espacio AF Polanco, México D.F.
- Ausencia y Abandono, Galeria Eduardo Fernandes, São Paulo
- Gunkanjima, Patio de la Fototeca, Zacatecas, México.
- Gunkanjima, Galeria Bateau Mouche, Toluca, México.
- Gunkanjima, Galeria Ibero, Puebla, México.

2009

- Gunkanjima, Espacio Cultural Japón, México D.F.
- Pop. Density, Galería Nina Menocal, México D.F.
- Nouadhibou, Galería Conejo Blanco, Mexico D.F.

2008

- Nouadhibou, Galería Piso 51, México D.F.

2007

- Ausencia y Abandono, Galería Uno, México D.F.

↳ Group Shows

2010

- Casa Francia, México D.F.
- Mexico Vivo, Museo Arte Moderno, México D.F.
- SP-Arte, São Paulo
- Galeria Conejo Blanco, México D.F.
- Galería Epson México D.F.

2009

- Burn Gallery, New York
- Sema Topaloglu Studio, Istanbul
- Espace Dupon, Paris

2008

- Casa Cor, São Paulo
- Atelier Art Gallery, Miami

2005

- Club Fotográfico Mexicano, México D.F.

jan smith | naukluft

To learn where you may see Jan's work personally, or if you are interested in bringing Naukluft as an exhibition to your community, please contact:

✎ Direct
contact@smithjan.com
www.smithjan.com
T: +1 212 660 2121

All images and text © Jan Smith 2009



ⓘ About ⓘ Production ⓘ Portfolio ⓘ Artist ⓘ Contact

